

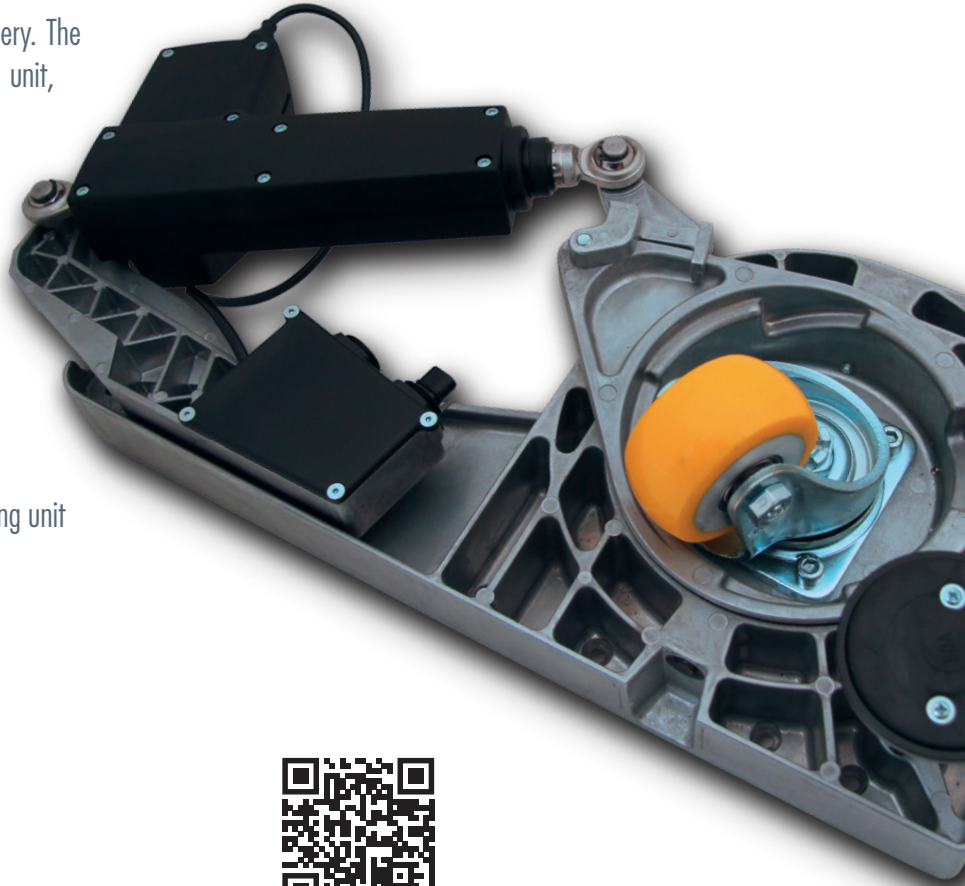
# C.Adolph Up2Move

Experience a new dimension of safely moving scenery. The hoisting is performed by a patented rotating/lifting unit, which is driven by an electric linear drive.

## SPEED

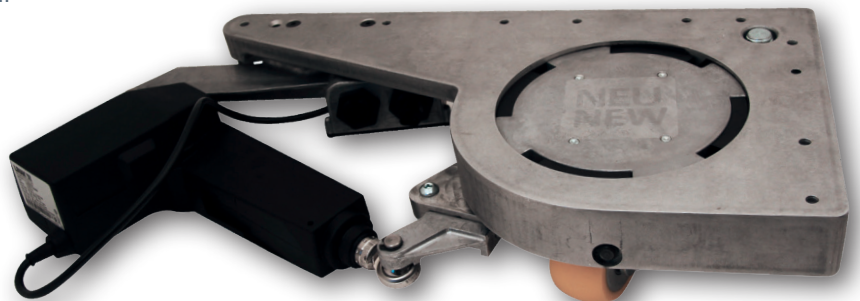
Up2Move 35-S:  
lift 35 mm in 8 seconds,  
load capacity: 250 kg

- safe operation thanks to patented rotating/lifting unit
- no dropping in event of a power failure
- every unit is self-sufficient
- maintenance-free system
- 3,5 cm lift
- 250 kg load capacity in every position
- modular and reusable design
- cost-effective
- no swivelling to the side during lifting
- nearly silent
- optional return signal for controller
- simply energy supply via 24-V-Power-Supply-Unit or on battery power
- alternative model with heavy load foot for lowered load



sku  
230-9710-1007

designation  
Up2Move 35-S



## C. ADOLPH®



**Up2Move 35-S:**

lift 35 mm / load capacity: 250 kg

