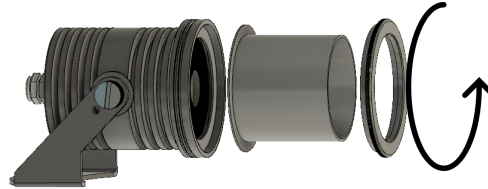




Red, Green, Blue, Amber,
Lime, White, UV



Screw on retaining ring for
quick accessory swaps

Date
Project
Fixture
Comments

Description

Introducing the newly revised Gantom 7, the ultimate solution for lighting designers who want to pack a powerful punch in a small package. With its seven-color output and compact design, this LED spotlight delivers a soft yet punchy beam that produces homogeneous color mixing, even at close distances.

Featuring a native 15 degree beam angle, the Gantom 7 includes 4 diffusion filters, hex louvre, and optional top hat, half hat, and angled cowlings for easy control over the beam. Plus, its native DMX control and balanced dimming curve make it perfect for even the most demanding of lighting designers.

At just 7 watts, the Gantom 7 is a highly efficient LED fixture that offers a virtually unlimited color palette. So, whether you're illuminating a small space or a large venue, the Gantom 7 has everything you need to create stunning lighting designs.

Physical	Color Specifications	Optics	Ordering Information	
L: 85mm (3.35") W: 60mm (2.36") H: 60mm (2.36") <small>*Fixture w/o Yoke</small>	Red (635nm), Green (515nm), Blue (450nm), Amber (598nm), White 6500K, Lime (550nm), Ultraviolet (395nm)	15° Native Beam	Fixture Part #	Description
Weight: 315 grams (11.1 oz)	Multiple color profiles selectable (RGB, RGBA, RGBW, RGBAW+UV, RGBAWL+UV)	4pcs Assorted beam shaping filters Included	GP277B	Gantom 7 - Seven Color Spotlight - Pro Cable Connector - Hex Louver
Black anodized aluminum		650 lx (60.4 fc) @ 1m	Accessory Part #	
Silent convection cooled design	Installation	Lowest Dimming Level:05%	FA47	IP67 Plastic Cap & O-Rings for Gantom One, Gantom 7, and Gantom One Up "B" models
Power	IP65 - Indoor / Outdoor Temporary*	Control	FA44	Top Hat / Snoot for Gantom One, Gantom 7, and Gantom One Up "B" model
12-24vdc @ 609mA~.313mA 7.5w max	IP67 - With FA47 Installed	DMX 512, DB32 Required to set DMX address & set static colors	FA45	Half Hat for Gantom One, Gantom 7, and Gantom One Up "B" models
Operating Temp: 0-50 C	Operating Temp: 0-50 C	CH1 - Master Dimmer CH2 - Red level CH3 - Green level CH4 - Blue level CH5 - Amber level CH6 - Cool White level CH7 - Lime level CH8 - Ultraviolet level	FA46	Angled Cowling for Gantom One, Gantom 7, and Gantom One Up "B" model
50,000hr LED Life	*Do not use for outdoor applications where water can collect on lens without FA47		RP34	Replacement Diffusion Filter Pack
Gantom Pro Cable Connector			DB32	DarkBox Programmer V2 - Required to set DMX address

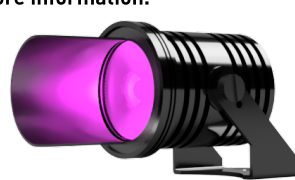
Gantom 7 is backed by Gantom's two year warranty. Special orders and Stucchi track options available. Please contact Gantom at sales@gantom.com for more information.



Shown with included Hex
Filter



Shown with optional FA44-
Top Hat



Shown with optional FA45 -
Half Hat



Shown with optional FA46 -
Angled Cowling