

TELEVISION STUDIOS

APPLICATION GUIDE

SINGLE-PERSON MOBILE LIGHTING

PAGE 2

An example of single-subject lighting used in on-location filming. This application offers quick-to-setup portrait lighting for one interviewee.

SINGLE-PERSON PORTRAIT LIGHTING

PAGE 3

This lighting example of a single subject in a studio uses Fresnels and softlights and provides smooth, balanced lighting for a single, fixed-position interviewee.

TWO-WAY INTERVIEW LIGHTING

PAGE 4

This example of an in-studio lighting setup for a two-way interview demonstrates how luminaires and controls from Strand can provide consistent lighting for two subjects.

50m² (538 ft²) INTERVIEW STUDIO

PAGE 5

A sample lighting setup for a small interview studio of approximately 50m² (538 ft²). Addresses the lighting of multiple subjects in at least two different locations in the studio.

100m² (1076 ft²) INTERVIEW STUDIO

PAGE 6

A mid-sized interview studio example that addresses the lighting of several different subjects and lighting locations in a 100m² (1076 ft²) space. This same example could be scaled up for larger studios.

KEY PRODUCTS

PAGES 7 - 8

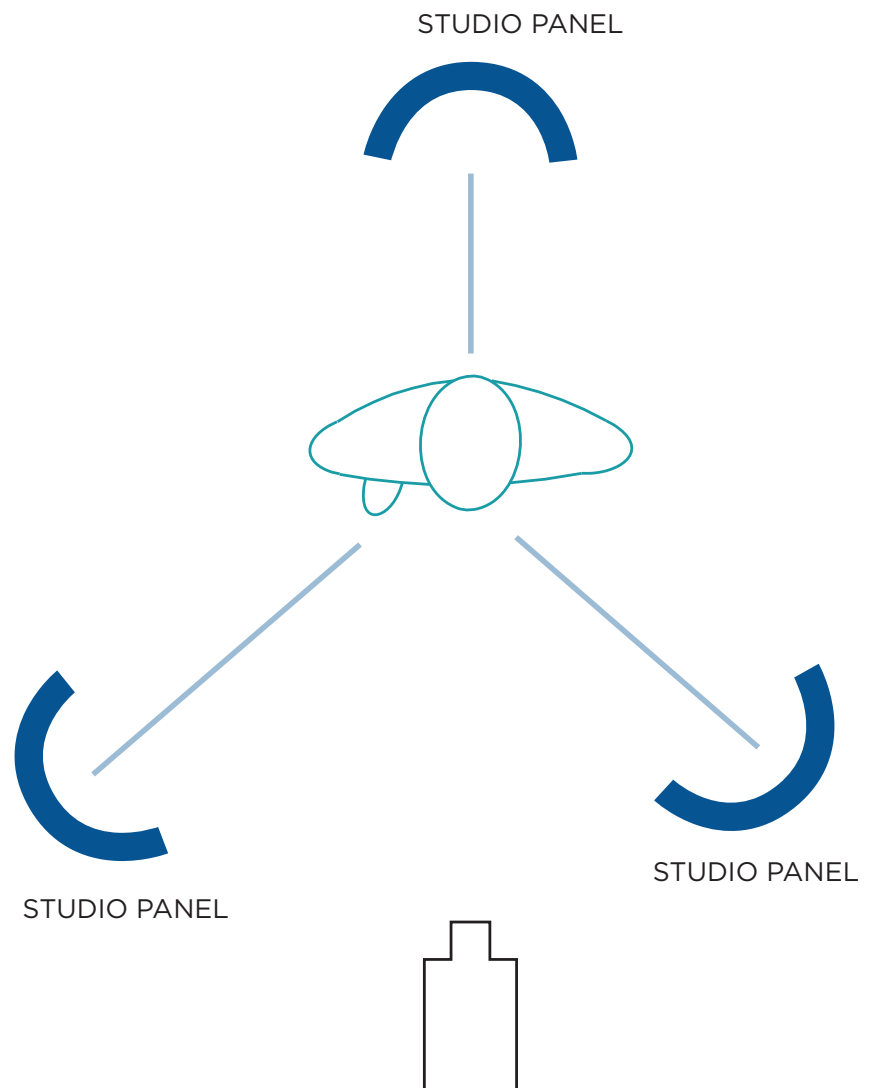
For over a hundred years, we've been blending innovative engineering and a love of performance to create the high-quality solutions that help drive some of the world's most extraordinary experiences. With advanced optics, innovative control, and complete end-to-end lighting system solutions for installation and production, Vari-Lite and Strand enhance the passion and performance of artists around the globe, whether that's a school play or a world tour.

SINGLE PERSON MOBILE LIGHTING

On-location videography of a single subject requires lighting that is quick to set up and can be easily adjusted to a variety of existing lighting and power conditions. Pictured below is a typical 3-point lighting setup for a single person using the Strand Studio Panel MKII. This tunable white fixture can be mounted on stands or handheld and can operate on AC and DC voltage.

LUMINAIRES

Strand Studio Panel MKII Tunable White (x 3)



SINGLE PERSON PORTRAIT LIGHTING

Portrait lighting of a single person in a studio setting requires balanced lighting from as few fixtures as possible. In the example below, there is pictured a typical three-point lighting setup using two Strand 200F LED Fresnels serving as key and backlights. A single Strand 150S Softlight provides fill light, and the system is controlled using the intuitive Strand 200 Plus console.

LUMINAIRES

Strand 150S LED Softlight (x 1)

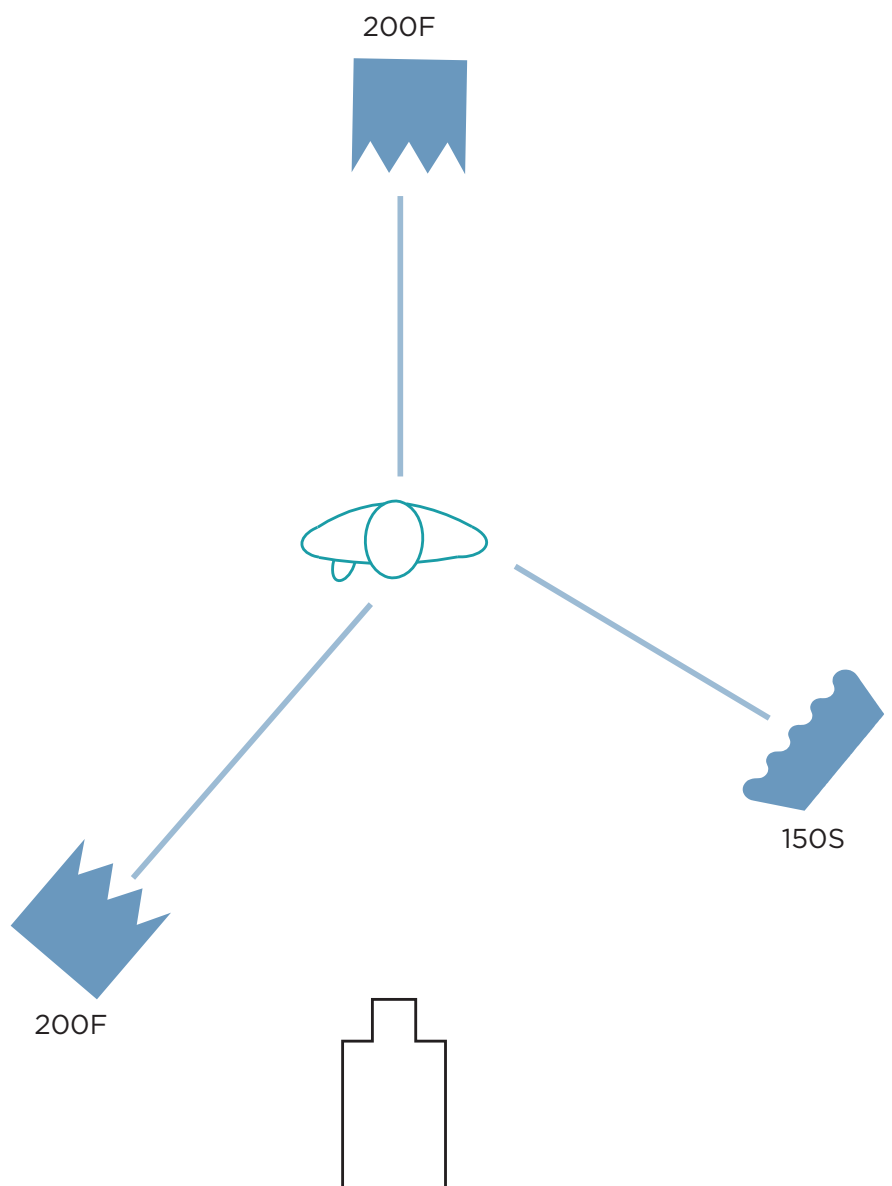
Strand 200F LED TV Fresnel (x 2)

ACCESSORIES

Strand 150S Honeycomb - 36 degree (x 1)

CONTROL

Strand 200 Plus Series 12/24 Lighting Control Console (x 1)



TWO-WAY INTERVIEW LIGHTING

Lighting two people in an interview setup requires lighting that is consistent across both subjects and has the right scale for the application. In the application example below, two Strand 200F LED Fresnels are positioned upstage, acting as both key lights and backlights. Two Strand 150S Softlights are positioned directly in front of the subjects to provide a filler light. Strand Aurora LED Strip luminaires are used to light the background, offering more depth to the picture.

LUMINAIRES

Strand 150S LED Softlight (x 2)

Strand 200F LED TV Fresnel (x 4)

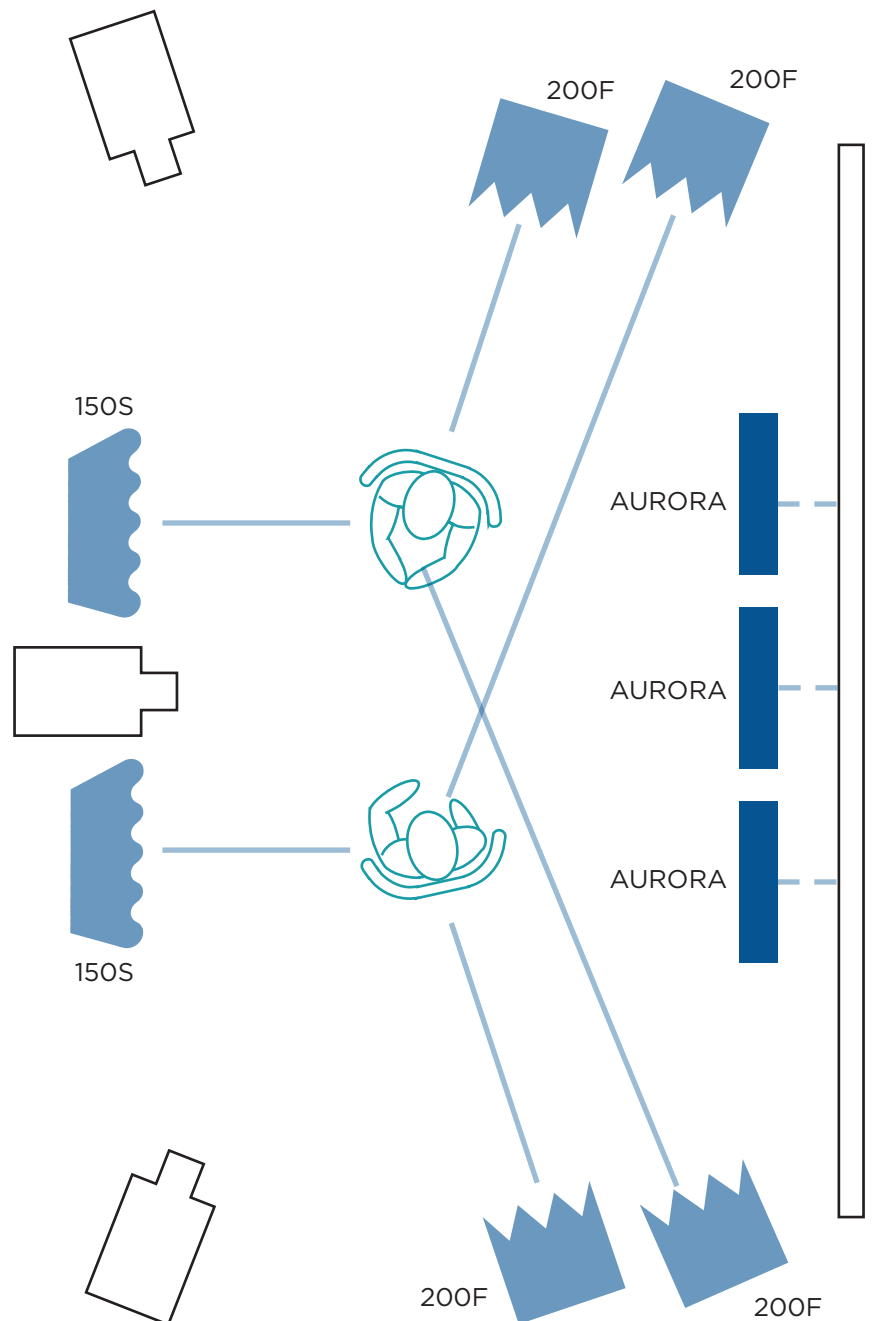
Strand Aurora LED Strip (x 3)

ACCESSORIES

Strand 150S Honeycomb - 36 degree (x 2)

CONTROL

Strand 200 Plus Series 12/24 Lighting Control Console (x 1)



50m² (538 ft²) INTERVIEW STUDIO

Interview studios need to be able to address multiple different interview formats in a single studio. This example offers three different single and multiple-subject locations with a very simple plot using 200F and 400F Fresnels as key and backlights with a rig height of 4m (13 ft). The 150S Softlights are used as fill lights, and when a larger throw is needed, a 300S fixture is shown. The Cyclorama in this example is lit from either the top or bottom using a Strand PL1CYCMKII. Strand Leko[®] LED Profiles can be used to provide precise key lighting or to project breakup gobos or logos.

LUMINAIRES

Strand 400F LED TV Fresnel (x 8)

Strand 200F LED TV Fresnel (x 10)

Strand 150S LED Softlight (x 8)

Strand 300S LED Softlight (x 1)

Strand Leko[®] LED Profile
(x 4)

Strand PLCYC1 MKII LED
Cyclorama Luminaire (x 12)

ACCESSORIES

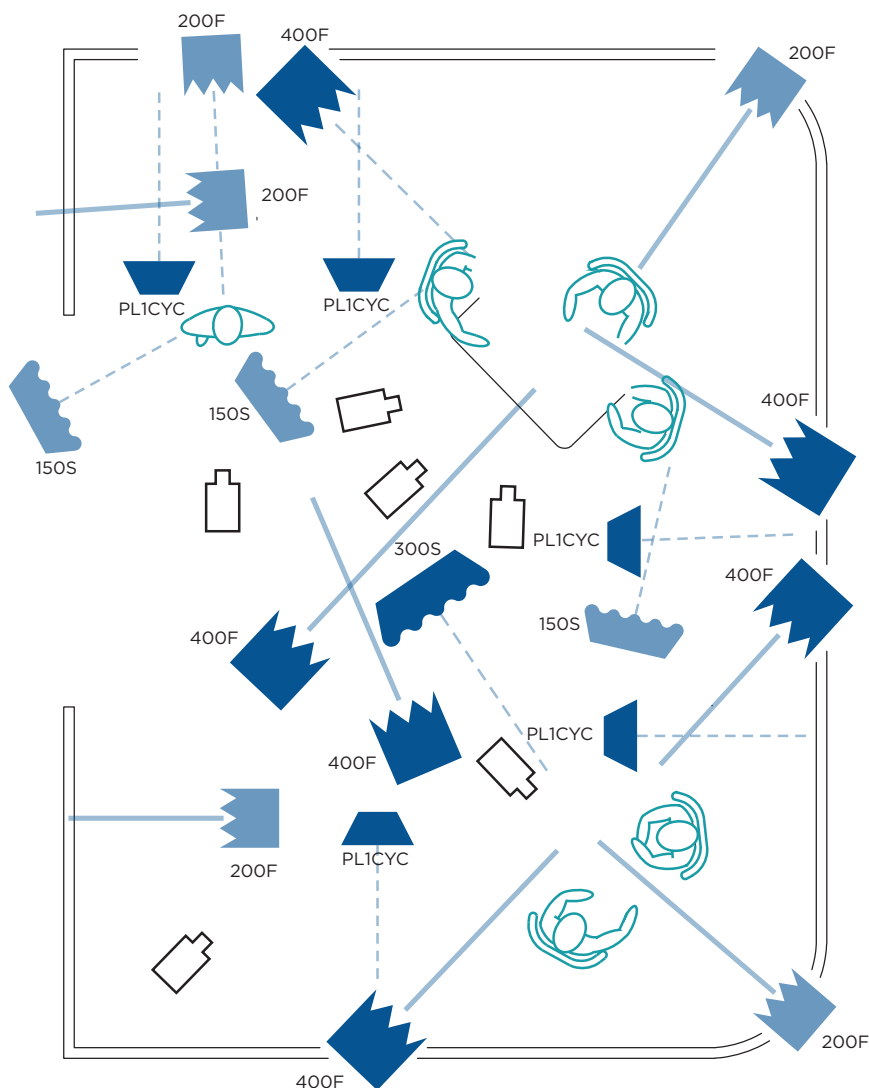
Strand 150S Honeycomb – 36
degree (x 8)

Strand 25°-50° Lens Tube (x 4)

CONTROL

Strand NEO Compact 10 Lighting
Control Console (x 1)*

**Available Summer 2020*



100m² (1076 ft²) INTERVIEW STUDIO

As interview studios grow in size, additional areas are added to the set, with more locations requiring the same balanced lighting across all of the filming locations. The fixture layout in this example shows a plot of four areas using the 400F and 200F Fresnels as key and backlights. 150S and 300S Softlights are used as fill lights with honeycomb accessories to stop spill. Strand Leko[®] LED Profiles provide precise key lighting and gobo projection.

LUMINAIRES

Strand 400F LED TV Fresnel (x 16)

Strand 200F LED TV Fresnel (x 10)

Strand 150S LED Softlight (x 4)

Strand 300S LED Softlight, 3100K
(x 6)

Strand Leko[®] LED Profile
(x 4)

Strand Coda LED Cyclorama
Luminaire (x 12)

ACCESSORIES

Strand 150S Honeycomb – 36
degree (x 4)

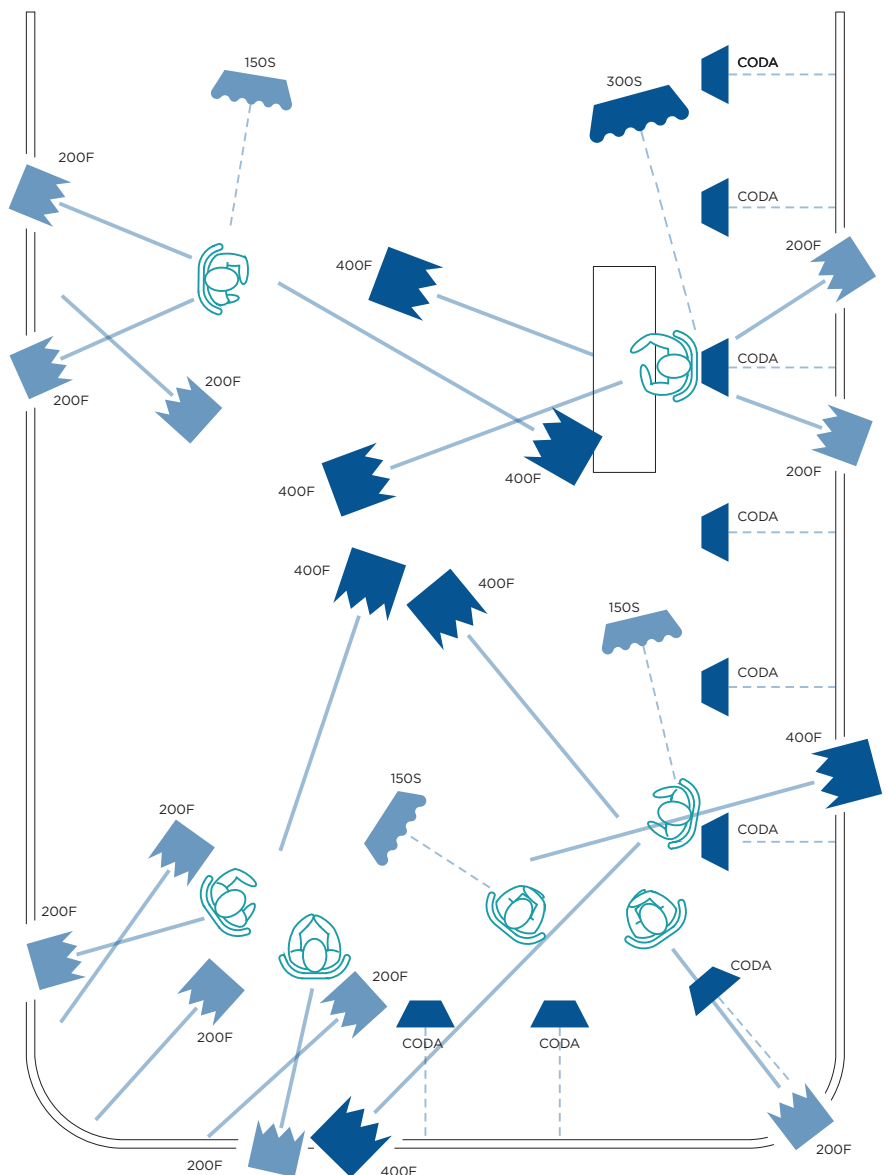
Strand 300S Honeycomb – 36
degree (x 6)

Strand 25°-50° Lens Tube (x 4)

CONTROL

Strand NEO Compact 10 Lighting
Control Console (x 1)*

**Available Summer 2020*



KEY PRODUCTS



STRAND STUDIO PANEL MKII

Featuring calibrated white color temperature settings of 3200K and 5600K, Strand Studio Panels are ideal for a wide range of lighting applications. Requiring just 50 Watts, these luminaires operate on AC or DC voltage or optional battery power.



STRAND 150S LED SOFTLIGHT

The Strand 150S Softlight features panels with both calibrated white color temperature settings of 3200K and 5600K, making it ideal for a wide range of lighting applications. Natural convection cooling without fans, it offers a quiet operation environment during recording.



STRAND 300S LED SOFTLIGHT

The Strand 300S is a slimline, large LED studio softlight designed specifically for TV broadcast lighting, with a very high TLCI rating in excess of 94 and a consistent beam output with quiet operation. A large illuminance output area, 50° beam angle for a smooth even output to a far distant object.



STRAND 200F LED TV FRESNEL

The Strand 200F is a medium power LED TV Fresnel designed specifically for TV broadcast lighting. A very high TLCI rating provides an excellent quality of light, perfect for the camera. The 200F is available in 3200K and 5600K in both manual and pole operated formats, making it perfect for studio use.



STRAND 400F LED TV FRESNEL

The Strand 400F is a high-power LED fresnel for TV broadcast lighting. A very high TLCI rating provides an excellent quality of light, ideal for the camera. It can be pole-operated or manually-operated, with a pole-operated focusing knob at the front and manual knob at the rear.



STRAND LEKO® LED PROFILE

The Strand Leko® LED Profile is available in a full color RGBALC version as well as two tunable white versions, offering a wide color range and high CRI that can be easily controlled with traditional CYM controls using the SmartColor Control system.



STRAND PLCYC1 MKII LED CYC

Using a combination of LED source technology and a uniquely shaped symmetrical reflector, the Strand PLCYC1 delivers consistent light distribution without the need for inefficient vertical or horizontal spreader lenses.



STRAND AURORA LED STRIP

The Strand Aurora LED Strip is a high output strip luminaire that provides rich RGBALC color mixing for set piece illumination, graze / cyc lighting, foot lighting, and more. Available in a 4-cell and 12-cell version, it can be easily controlled with traditional CYM controls using the SmartColor Control System.



STRAND CODA LED CYC

The Strand Coda LED Cyc is a high output cyc luminaire that provides rich RGBALC color mixing but can be easily controlled with traditional CYM controls using the SmartColor Control system. With 2-zone color control, it is easy to create natural-looking split-color cyc coverage.

KEY PRODUCTS



STRAND 200 PLUS CONSOLE

The Strand 200 Plus Console offers a choice of 24 or 48 submasters plus conventional preset operation, for complete control of both conventional dimmers and a host of sophisticated next generation luminaires.



STRAND NEO COMPACT 10 CONSOLE

The Strand NEO Compact 10 Console allows the ability to seize light; to grab, move, change position, color, and motivate the lighting design simply and effectively. With powerful features in a compact body, it address the needs of professionals and amateurs alike.



STRAND NEO CONSOLE

A Strand NEO Console is the closest that a designer can get to actually touching the light. With an expandable control system, it caters for the needs and requirements of our most demanding customers.

EFFECT LUMINAIRES



VARI-LITE VL5LED WASH

The Vari-Lite VL5LED WASH is a compact, high output LED wash fixture that brings a host of modern features to a legendary form factor. LED blade lights accent the Dichro*fusion blades, while the RGBALC color system provides a wide range of rich color options.



VARI-LITE VL10 BEAMWASH

The Vari-Lite VL10 BEAMWASH packs a broad suite of dynamic effects and class-leading power into a compact, fast-moving body, offering endless creative possibilities. With 28,000 lumens of output, the exclusive VL*FX animation wheel, and a weight of just 33kg, it is brighter, lighter and more versatile than any comparable fixture.



VARI-LITE VL2600 SERIES

The VL2600 Series offers a broad range of saturated colors using traditional CMY+CTO controls. The Series includes a Profile, Spot, and Wash, offering three options sharing the same compact, fast, and accurate design. This ensures the VL2600 Series is easy to prep, use, and maintain.



VARI-LITE VL1100 LED

The Vari-Lite VL1100 LED is a profile moving head luminaire designed specifically for theatrical and television applications. Delivering high quality light and consistent color reproduction, the VL1100 LED is a true alternative to a traditional tungsten source in a moving head fixture.



VARI-LITE VL6000 SERIES

The VL6000 Series is a visual icon, with a large 14" front aperture and a 50,000+ lumens of output, for a huge impact in any production. Available in both a Beam and a Wash version, the VL6000 Series is the ultimate large-format fixture.