

## RFP / RFP-CB

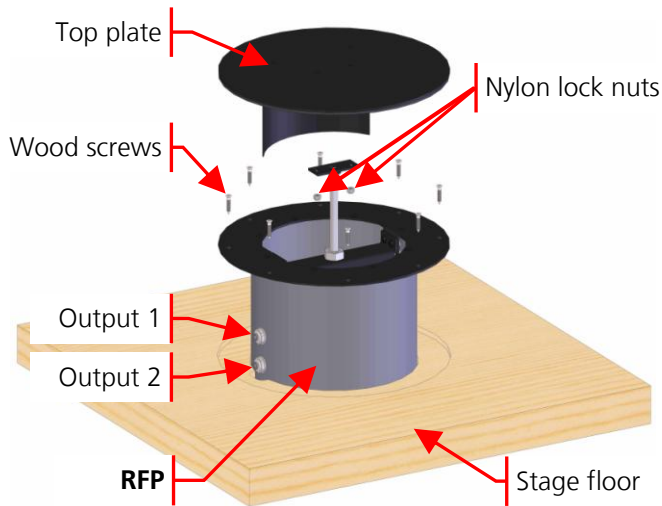
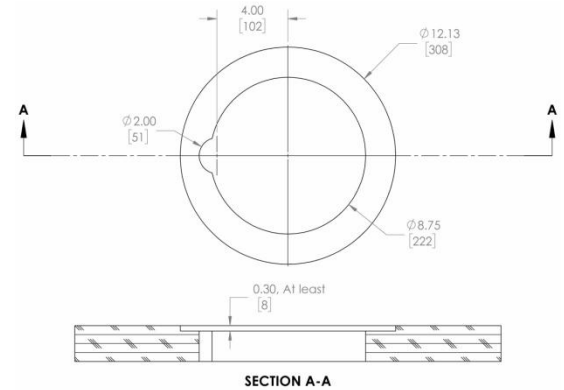
### Round Floor Pocket with Control Box

### Installation

Cut a 2.00" (51 mm) hole, through the stage, 4.00" (102 mm) from the desired center point.

Cut a 8.75" (222 mm) hole, through the stage, from the center point.

Bore a 12.13" (308 mm) hole, 0.30" (8 mm) deep or more, from the center point.



Unscrew the two nylon lock nuts below the top plate of the **RFP** (Round Floor Pocket) and remove the plate.

Gently slide the **RFP** in its intended position, and attach it with some wood screws (not included).

Re-install the top plate.

Install the **RFP-CB** (Control Box), below the stage, near the **RFP**.

Connect the gas lines (included) between the **RFP-CB** and the **RFP**. Output 1 corresponds to the upper gas entry on the **RFP**, and Output 2 to the lower one.

Connect the gas bottle (CO<sub>2</sub> or N<sub>2</sub>, industrial grade), equipped with a regulator, to the **RFP-CB**. The gas inlet is an Oxygen Adaptor (9/16-18 R.H).

Compressed air (filtered, dry and oil less) may also be used.

Set the pressure between 30 psi (207 kPa) and 100 psi (689 kPa).

Affix the fog conduit to the bottom of the PVC tube.

**Connect** the data wiring (DMX or RDM) to the Control Box, if you want to use remote control.

**Plug** the PowerCON connector (100–250 VAC, 50/60 Hz, 50 W)

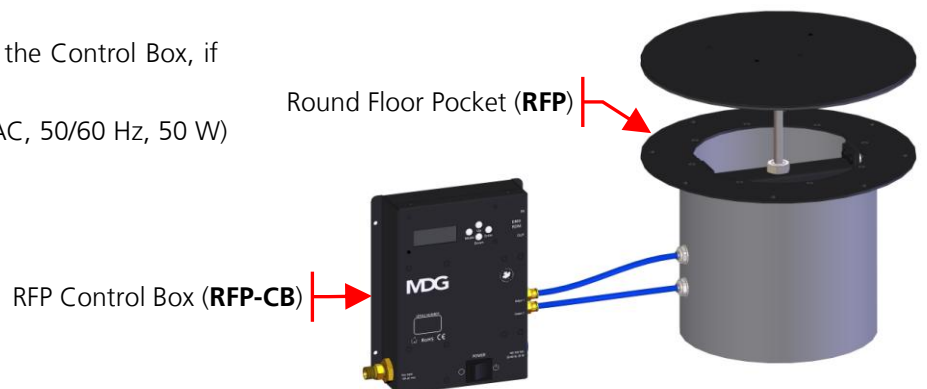
**Switch On** the power

The **RFP** is now ready to be used.

### DMX Control

The **RFP** DMX interface uses one (1) channel:

- DMX value < 128 (0 - 50%)      RFP **CLOSED**
- DMX value ≥ 128 (50 - 100%)      RFP **OPENED**



# Technical Specifications

Operating voltage:	100-250 VAC, 50/60 Hz, single phase, 50 Watts UL/CSA /CE 18 AWG cord Ground / Earth connection <b>REQUIRED</b>		
Interface:	Manual (4 buttons keyboard + LCD) 1 standard DMX channel, XLR-5 Connector, DMX512-A and RDM ANSI E1.20 protocols Output to link other DMX devices		
Gas:	Oxygen Adaptor (9/16-18 R.H) as inlet Clean compressed Air (filtered, dry and oil less) or Inert Gas (CO <sub>2</sub> , N <sub>2</sub> industrial grade) 30 (207 kPa) to 100 psi (689 kPa) max		
Operating conditions:	0 °C to 50 °C (32 °F to 122 °F) 90 % relative humidity @ 50 °C (122 °F), non-condensing		
Storage conditions:	-40 °C (-40 °F) to 60 °C (140 °F) 80% relative humidity @ 60 °C (140 °F)		
Approval	CE, CSA and UL pending		
Weight:	RFP	15.4 lbs	(7 kg)
	RFP-CB	3.3 lbs	(1.5 kg)

## Dimensions

